



M19SB with variable arm lengths

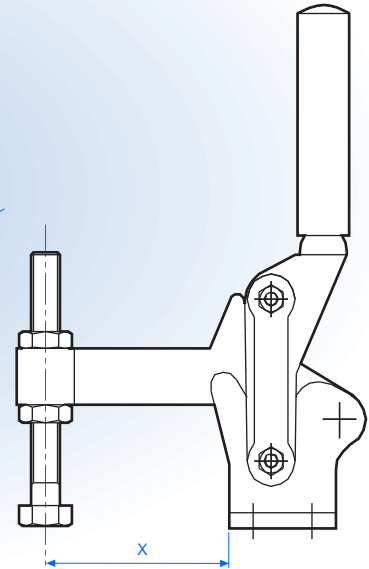
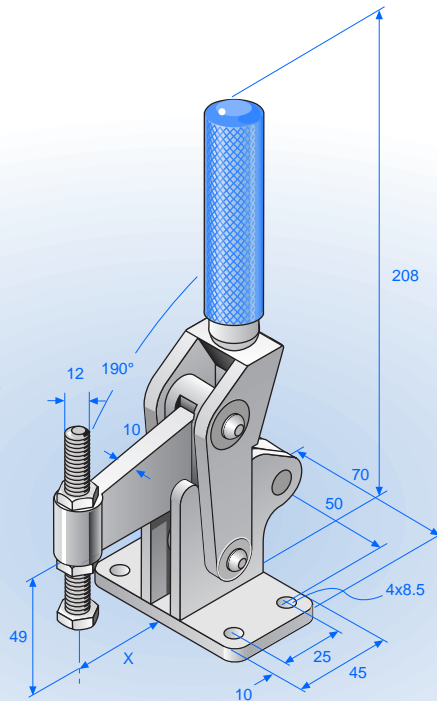
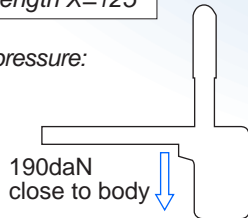
- Material:** Heavy gauge steel
Hardened pins and bushes
- Finishing:** Chemi-Blackened
- Supplied with:** 12x100mm spindles
- Max Holding pressure:** 800daN close to body
- Weight:** 1.5Kgs
- Arm length options:** 50, 75, 92, 125
- To Order:**

M19/SB- 125

Clamp Arm Length

- 50** Length X=50
75 Length X=75
92 Length X=92
125 Length X=125

Clamping pressure:



M20/SB-00

M20TB with variable arm lengths

- Material:** Heavy gauge steel
Hardened pins and bushes
- Finishing:** Chemi-Blackened
- Supplied with:** 12x100mm spindles
- Max Holding pressure:** 1300daN close to body
- Weight:** 2Kgs
- Arm length options:** 62, 85, 112, 135
- To Order:**

M20/SB- 112

Clamp Arm Length

- 62** Length X=62
85 Length X=85
112 Length X=112
135 Length X=135

Clamping pressure:

