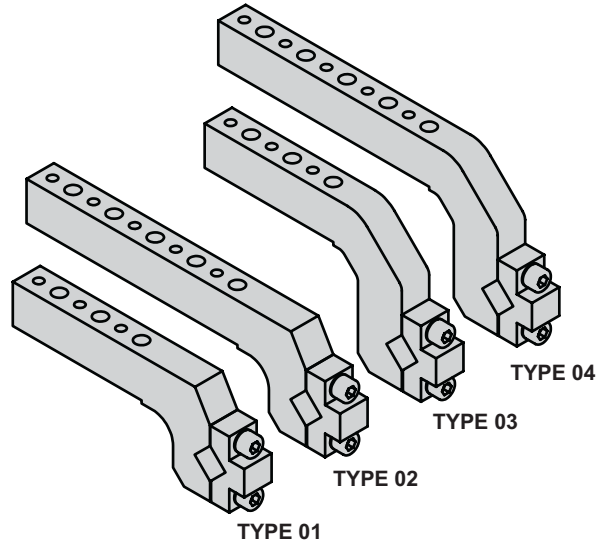
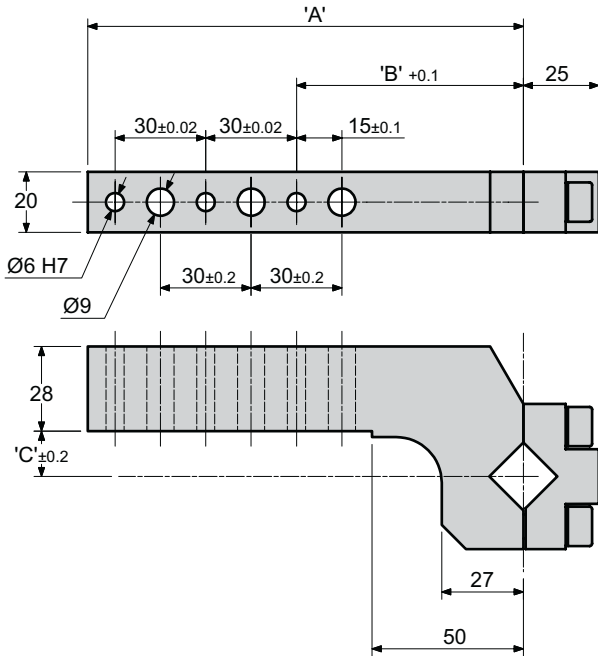


SINGLE ARMS

X••50



X••50 Clamp Arm Options



CLAMP ARM	'A'	'B'	'C'	WT
TYPE 01	144	75	15	0.9
TYPE 02	204	105	15	1.1
TYPE 03	144	75	45	1.0
TYPE 04	204	105	45	1.2

TO ORDER :

See order guide for further information

X••150-D-ES1- RA - 01 - 090

Arm Type		Arm options	
RA	Right hand arm	01	Arm type 1
LA	Left hand arm	02	Arm type 2
DA	Double arm	03	Arm type 3
		04	Arm type 4

Right Hand Arm RA

Double Armed : DA

Left Hand Arm LA

