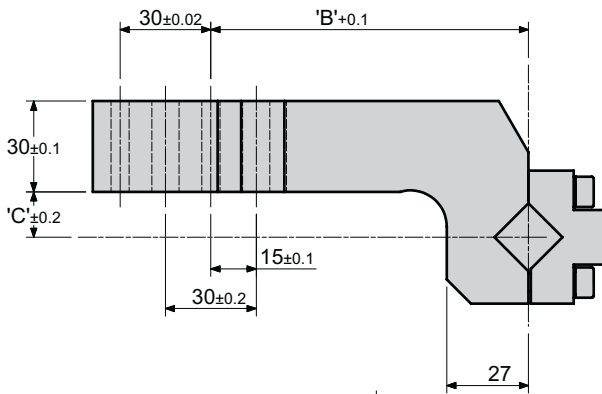
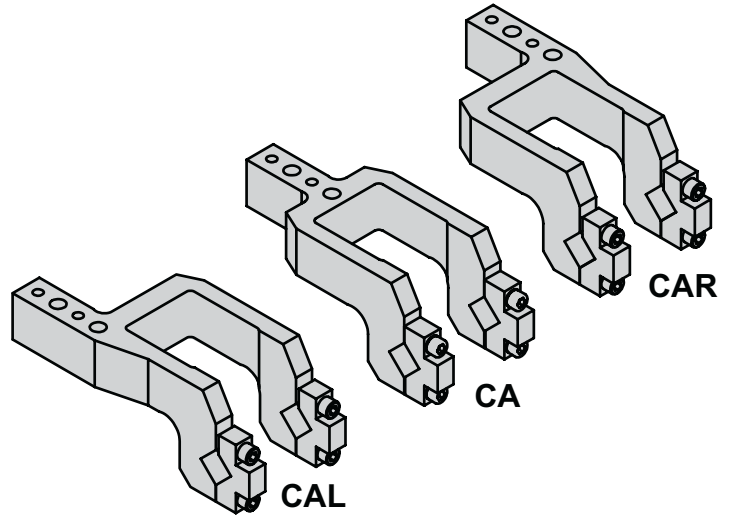
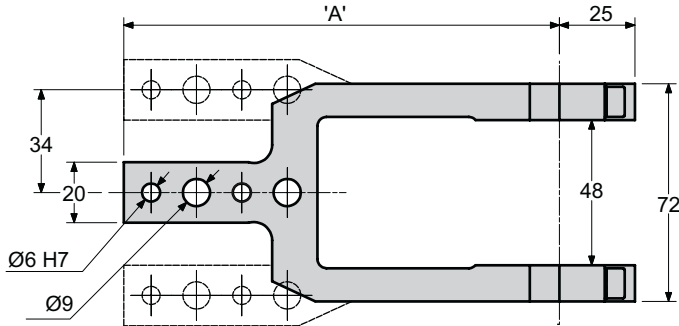


DOUBLE ARMS

X••50



X••50 Clamp Arm Options



CLAMP ARM	'A'	'B'	'C'	WT /kg
TYPE 01	144	105	15	1.2
TYPE 02	144	105	40	1.3

TO ORDER :

See order guide for further information

X••150-D-ES1- **CA** - **01** - 090

Arm Type

- CA Centre arm
- CAR Right hand arm
- CAL Left hand arm

Offset

- 01 Arm type 1
- 02 Arm type 2

