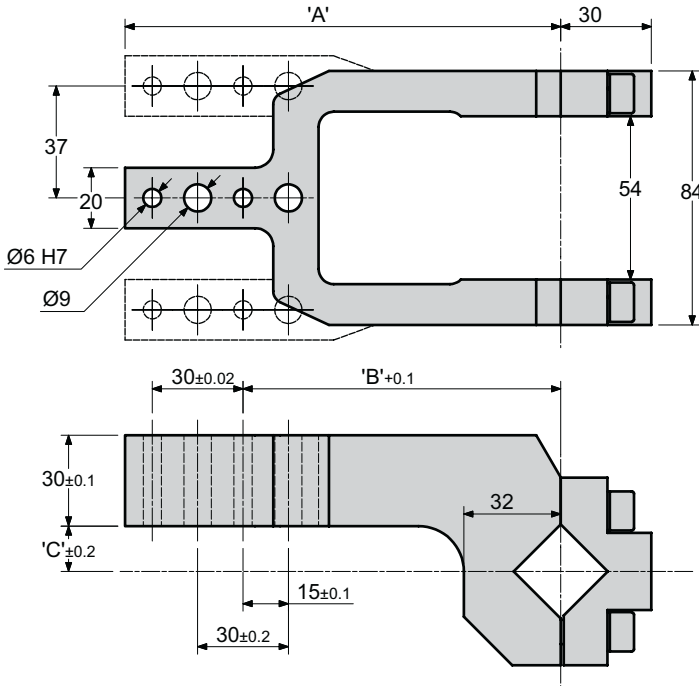
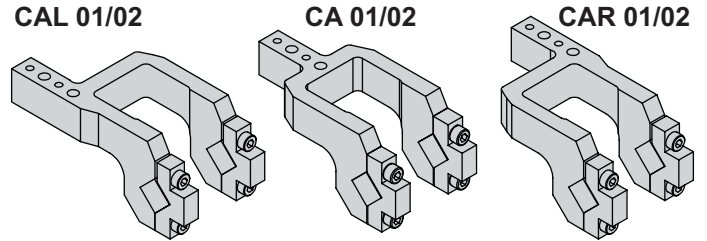
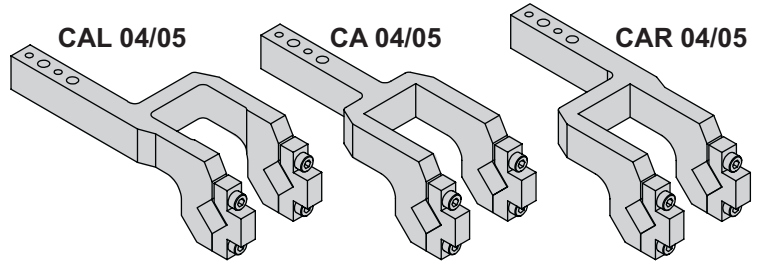


DOUBLE ARMS

X••63



X••63 Clamp Arm Options



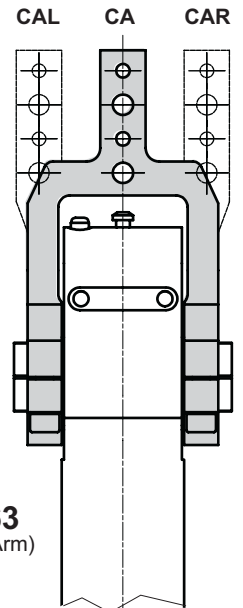
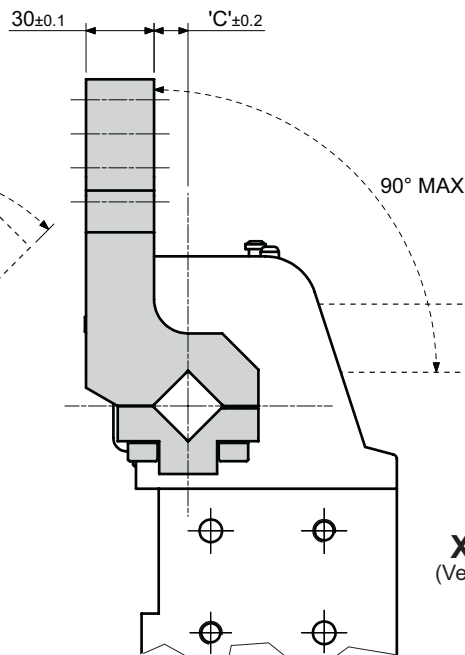
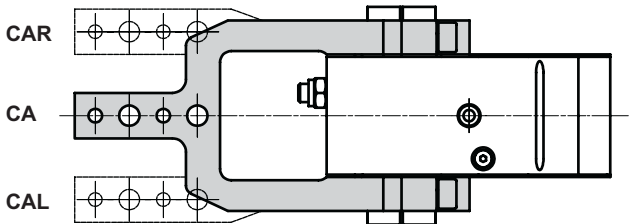
CLAMP ARM	'A'	'B'	'C'	WT /kg
TYPE 01	144	105	15	1.5
TYPE 02	144	105	40	1.7
TYPE 04	204	165	15	1.9
TYPE 05	204	165	40	2.1

TO ORDER :

See order guide for further information

X••163-D-ES1- **CA** - **01** - 090

Arm Type	Offset/Length
CA Centre arm	01 Arm type 1 (15/144)
CAR Right hand arm	02 Arm type 2 (40/144)
CAL Left hand arm	04 Arm type 4 (15/204)
	05 Arm type 5 (40/204)



X••163
(Horizontal Arm)

X••263
(Vertical Arm)